



Subscribe to
Caron Connections, our free e-newsletter.

Enter your e-mail address

Subscribe

The Yarn. The Web. The Experience.

Home

Yarns

Pattern Boutique

Designer Studio

Guide to Style

Caron Blog

Where to Buy

Juniper Cardi

designed by
Shannon Mullett-Bowlsby
for Shibaquyz Designz



Technique used: Knit



MATERIALS

[shop online](#)

[Naturally Caron.com JOY!](#)

(70% Acrylic/30% Bamboo; 2.5oz/70.8g,
138yds/127m):

6 (7, 8, 9, 10, 11) skeins Aquatica #0007

[shop online](#)

[One pair size US 9 \(5.5 mm\) straight needles](#) or

size to obtain gauge

Stitch holders

Yarn needle



Click for audio fashion show



click to enlarge

[Printer Friendly instructions](#)

[stitch chart](#) | [schematic](#)

SIZES

Small (Medium, Large/1X, 2-3X, 4X, 5-6X)

FINISHED MEASUREMENTS

Chest: 34 (40 3/4, 47 1/4, 54, 60 3/4, 67 1/4)"

Length: 17 (17 1/4, 17 1/2, 17 3/4, 18, 18)"

GAUGE

In Lace Pattern, 18 sts and 21 rows = 4"/10 cm

ABBREVIATION

Sk2p: Slip 1 knitwise, knit 2 stitches together, pass slipped stitch over. (2 stitches decreased)

STITCHES USED

Garter stitch: Knit every row.

Stockinette stitch (St st): Knit on RS, purl on WS.

Lace Pattern (multiple of 15 sts) (see Chart)

Note: You may use text or Chart for Lace Pattern.

Row 1 (RS): *P1, k3tog, k2, [yo, k1] 3 times, yo, k2, sk2p, p1; rep from * to end.

Rows 2 and 4: *K1, p13, k1; rep from * to end.

Row 3: *P1, k3tog, [k1, yo] twice, k3, [yo, k1] twice, sk2p, p1; rep from * to end.

Row 5: *P1, k3tog, yo, k1, yo, k5, yo, k1, yo, sk2p, p1; rep from * to end.

Row 6: Rep Row 2.

Rep Rows 1-6 for Lace Pattern

NOTE

Cardi body is worked in one piece starting at lower edge, to armhole. Piece is then divided into Right Front, Back, and Left Front. Sleeves are knitted separately and sewn on.

BODY

CO 171 (201, 231, 261, 291, 321) sts.

Knit 3 rows.

Est Patt (RS): K3 (edge sts, keep in Garter st), work in Lace Pattern to last 3 sts, k3 (edge sts, keep in Garter st).

Working in Garter st (knit every row) on first and last 3 sts, and Lace Pattern as est on remaining sts, work even until piece measures 9 1/2 (9 3/4, 8 1/2, 8 3/4, 7 1/2, 7 1/2)" from beg, ending with a WS row.

Divide for Fronts and Back (RS): Work 48 (56, 63, 71, 78, 86) sts as est, sl these sts to a holder for Right Front, increase 0 (1, 0, 1, 0, 1) st(s) (using M1 increase), work 75 (89, 105, 119, 135, 149) sts as est, increase 0 (1, 0, 1, 0, 1) st(s) (using M1 increase), sl these sts (including increased sts) to a holder for Back, work to end.

LEFT FRONT

Next Row (WS): Cont in patt as est, work even until armhole measures 7 1/2 (7 1/2, 9, 9, 10 1/2, 10 1/2)" from dividing row, ending with a WS row. BO all sts.

BACK

Next Row (WS): With WS facing, return to sts on holder for Back, join yarn. P1 (edge st, keep in St st), work in patt as est to last st, p1 (edge st, keep in St st)—75 (91, 105, 121, 135, 151) sts.

Working in St st on first and last st, and Lace Pattern as est on remaining sts, work even until armhole measures 7 1/2 (7 1/2, 9, 9, 10 1/2, 10 1/2)" from dividing row, ending with a WS row. BO all sts.

RIGHT FRONT

Next Row (WS): With WS facing, return to sts on holder for Right Front, join yarn. Cont in patt as est, work even until armhole measures 7 1/2 (7 1/2, 9, 9, 10 1/2, 10 1/2)" from dividing row, ending with a WS row. BO all sts.

SLEEVE

CO 66 (66, 81, 81, 96, 96) sts.

Knit 3 rows.

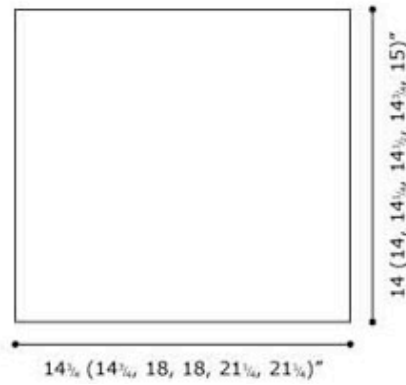
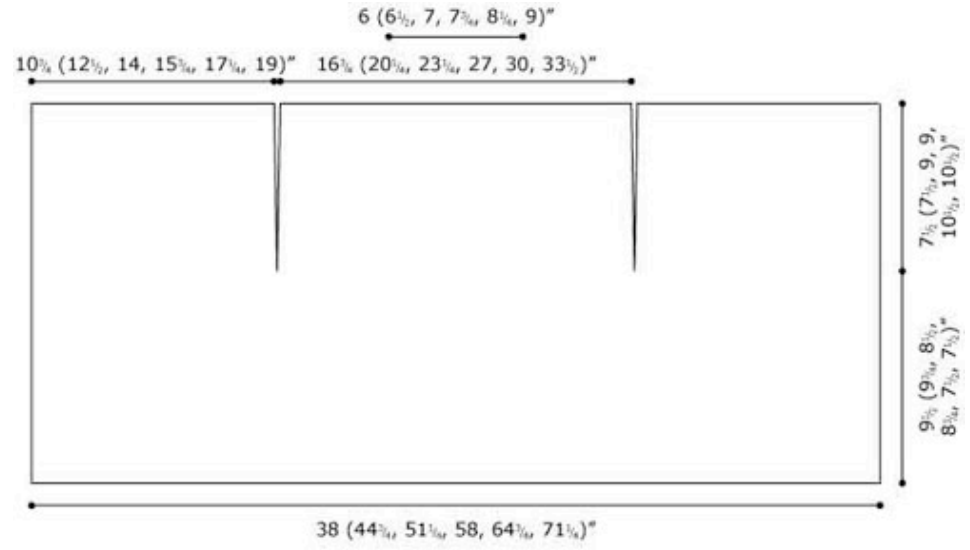
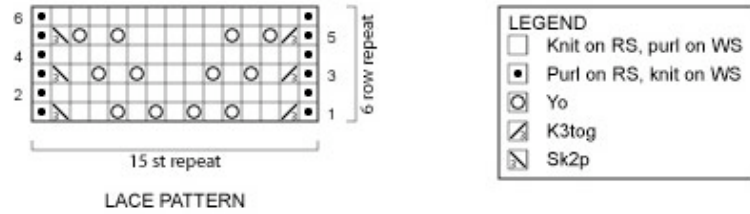
Est Patt (RS): K3 (edge sts, keep in Garter st), work in Lace Pattern to last 3 sts, k3 (edge sts, keep in Garter st).

Working in Garter st on first and last 3 sts, and Lace Pattern as est on remaining sts, work even until piece measures 14 (14, 14 1/4, 14 1/2, 14 3/4, 15)" from beg, ending with a WS row. BO all sts.

FINISHING

Sew shoulder seams for 5 1/4 (6 3/4, 8 1/4, 9 1/4, 11, 12)", or desired width. Sew in Sleeves. Sew Sleeve seams.

Using yarn needle, weave in ends.



CARON

©2011 Caron International