



Subscribe to Caron Connections, our free eNewsletter

Enter your e-mail address

subscribe

*The Yarn. The Web. The Experience.*

Home

Yarns

Pattern Boutique

Designer Studio

Guide to Style

Cari's Blog

Where to Buy

## Boden Yoked Pullover

designed by  
Kathy Perry



Technique used: Knit



[Naturally Caron.com Country](#)

75% Microdenier acrylic, 25% Merino wool; 3 oz/100 g, 185 yds/170 m ball):

#0025 Black 18 (20, 22, 24) oz (MC); #0020 Loden Forest 1 oz (A),

#0014 Deep Purple 1 oz (B) and

#0008 Silver Service 1 oz (C)

One pair US size 9 (5.5 mm), or size to obtain gauge

Tapestry needle

Bobbins

Crochet hook H/8 (5 mm)



click to enlarge

[Printer Friendly instructions](#)

**SIZES:** Small (Medium, Large, XLarge)

### KNITTED MEASUREMENTS

Bust 40 (44, 48, 52)"/ 101.5 (112, 122, 132) cm

Length 24 ½ (25, 25 ½, 26)"/ 62 (63.5, 65, 66) cm

### GAUGE

In St st, 17 sts and 23 rows = 4"/10 cm

### KNIT STITCHES USED

Stockinette stitch (St st)

Fair Isle (see Chart)

### CROCHET STITCHES USED

Single Crochet (sc)

### PULLOVER

### BACK

Using MC, CO 88 (96, 104, 113) sts.

**Hem (RS):** Work in St st for 7 rows.

**Next row (WS):** K each st through the back loops to form a turning ridge on RS.

Cont even in St st until piece measures 14 ½ (14 ½, 13 ¾, 13 ¾)" from turning ridge, end WS row.

**Shape Armholes**

BO 10 (9, 9, 9) sts beg next 2 rows -- 68 (78, 86, 95) sts.

**Start Fair Isle:** Center Chart and follow Rows 1-31. Cont to rep Chart Rows 32-37 until armhole measures 10 (10 ½, 11 ¾, 12 ¼)", end with WS row.

**Shape Shoulders**

BO 14 (19, 22, 26) sts beg next 2 rows -- 40 (40, 42, 43) sts.

**Funnel Collar**

Using MC, work 2 rows. Center and work Fair Isle Chart Rows 3-8, then cont with MC for 12 rows. BO very loosely.

**FRONT**

Work same as Back.

**SLEEVES**

Using MC, CO 66 (66, 66, 70) sts.

**(RS)** Work in St st and inc 1 st each end every 11 (8, 6, 6) rows 10 (3, 10, 10) times, then every 0 (9, 7, 7) rows 0 (10, 8, 8) times; AT SAME TIME when sleeve measures 20" from beg center and work Fair Isle Chart Rows 1-13. Work 3 rows on 86 (92, 102, 106) sts in MC. BO loosely.

**FINISHING**

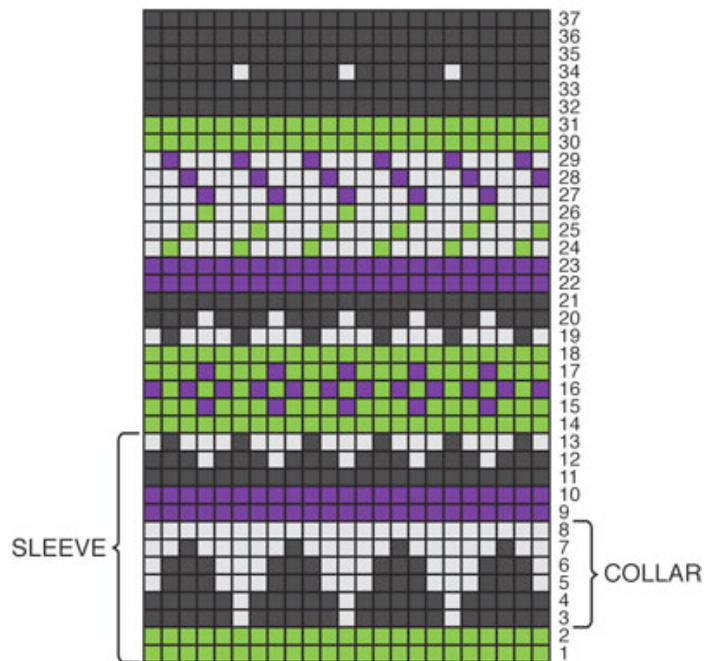
Sew shoulder and Funnel Collar seams. Turn Collar to inside and tack in place loosely. Sew sleeves to armholes. Sew side seams. Turn bottom hem to inside at turning ridge and tack in place.

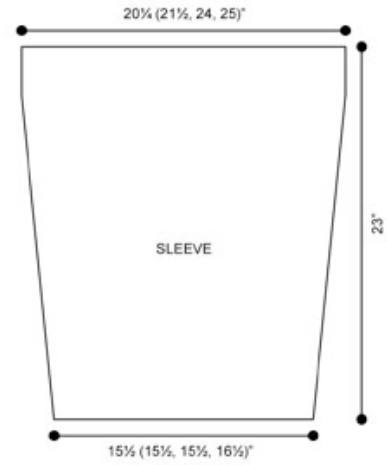
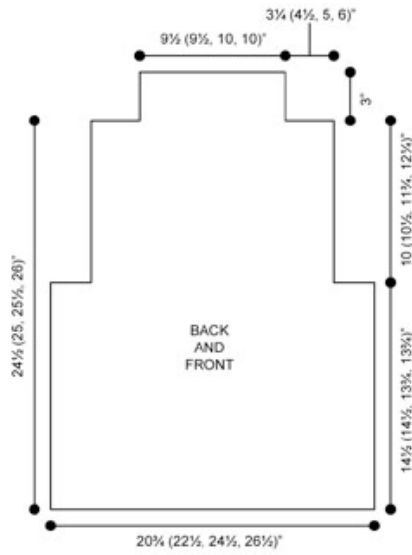
Using C, work 2 rows sc around sleeve bottoms.

Weave in all ends. Steam lightly if necessary.

**CHART KEY**

- = 0014 Deep Purple
- = 0024 Black
- = 0008 Silver Service
- = 0020 Loden Forest





[Visit Bond America online](#)

[Visit Caron International online](#)

**CARON**

©2009 Caron International