



Subscribe to Caron Connections, our free eNewsletter

Enter your e-mail address

subscribe

*The Yarn. The Web. The Experience.*

[Home](#)

[Yarns](#)

[Pattern Boutique](#)

[Gallery](#)

[Guide to Style](#)

[Cari's Blog](#)

[Where to Buy](#)

## Borgata Glovelets

designed by  
Marilyn Losee



Technique used: Knit



INTERMEDIATE  
YARN

Naturally Caron.com Spa

75% Microdenier Acrylic, 25% Bamboo): 3 oz

Shown in: #0004 Green Sheen

One pair size US 6 (4 mm), or size to obtain gauge

Cable needle

Stitch markers

Yarn needle

One pair size US 7 or 8 (4.5 or 5 mm) needles for

casting on

One set of double pointed needles, size 6 or size

to obtain gauge

Stitch holders

Row counter



[click to enlarge](#)

[schematic](#)

[Printer Friendly instructions](#)

**One size** – Adult Medium

Glove measures approximately 4"/10 cm wide by 11"/28 cm long

### GAUGE

In Stockinette stitch, 22 sts and 30 rows = 4"/10 cm

### ABBREVIATIONS

**k2tog (decrease):** Knit 2 sts together through the front loops.

**M1 (increase):** Lift strand between needles to left-hand needle and knit strand through the back loop, twisting it to prevent a hole.

**ssk (decrease):** Slip 2 sts, one at a time *knitwise*, to right-hand needle, return sts to left-hand needle in turned position and knit them together through the back loops.

**yo (increase):** Yarn forward between needles (to purl position), carry yarn *over* the needle to back, ready to knit the next stitch.

**C6B:** Slip 3 sts to cable needle, hold to back, k3, k3 from cn.

#### STITCHES USED

**Stockinette stitch (St st):** Knit on RS, purl on WS.

**1 x 1 rib (multiple of 2 sts)**

**Row 1 (WS):** \* P1, k1; repeat from \* across.

**Row:** Knit the knit sts and purl the purl sts as they face you.

Repeat Row 2 for 1 x 1 rib.

**Cable (panel of 6 sts)**

**Row 1 and all WS rows:** Purl.

**Rows 2, 4 and 6:** Knit.

**Row 8:** C6B.

Repeat Rows 1 – 8 for Cable.

**Eyelet Pattern (panel of 5 sts)**

**Row 1 (RS):** Ssk, yo, k1, yo, k2tog.

**Row 2:** Purl.

Repeat Rows 1 and 2 for Eyelet patt.

#### NOTES

Gloves are worked flat, from upper edge to fingers, then seamed.

If you prefer to use double pointed needles, you may do so, knitting in the round instead of flat, however instructions are only given for knitting flat/straight.

To cast on loosely, use needles 1 or 2 sizes larger than size for working glove.

#### RIGHT GLOVE

Loosely cast on 46 sts.

##### Establish Cable Pattern

**(WS)** Work in 1 x 1 rib across 30 sts, place a marker (pm); p6 (Row 1 of Cable); pm, k1, work in 1 x 1 rib to end.

Continuing in patt as established, work even until piece measures 6" from beginning, end with (RS) Row 8 of Cable.

**(WS)** Purl 1 row, removing Cable markers.

##### Establish Eyelet Pattern

**(RS)** K4, \* work Row 1 of Eyelet patt across next 5 sts, k6; repeat from \* 3 times, ending last repeat k4 instead of k6—46 sts.

**(WS)** Purl.

Continuing in patt as established, work even 6 rows—8 rows total.

##### Shape Thumb

**Row 1 (RS):** Work in pattern across 23 sts, pm for thumb; M1, k3, M1; pm, work in patt to end—48 sts.

**Row 2 and all WS rows:** Purl.

**Rows 3, 5, 7, 9 and 11:** Work in patt to marker, slip marker; M1, knit to next marker, M1; work in patt to end—58 sts after Row 11.

**Row 12:** Repeat Row 2.

##### Divide for Thumb

**(RS)** Work in patt across to second marker; remove marker, turn, leaving remaining 20 sts unworked (or place on holder).

**(WS)** Purl across to remaining marker; remove marker, turn, leaving remaining 23 sts unworked (or place on holder)—15 sts for thumb.

**(RS)** Continuing in St st on thumb sts only, work even for 6 rows.

Bind off all sts loosely.

##### Hand

With RS facing, join yarn at edge of thumb, ready to work 20 sts left unworked on Dividing row; work in patt to end.

**(WS)** Purl across all sts, joining 2 sections together at base of thumb—43 sts.

Work even in patt for 6 rows, end with a WS row.

##### First Finger

**Row 1 (RS):** K28, turn, leaving remaining sts unworked.

**Row 2:** P13, cast on 2 sts, turn—15 sts.

Work even in St st for 6 rows, end with a WS row.

Bind off all sts loosely—first finger completed.

**Second Finger**

**Row 1 (RS):** With RS facing, join yarn and pick up 2 sts from base of previous finger, k5, turn.

**Row 2:** P12, cast on 2 sts, turn—14 sts.

Work even in St st for 6 rows, end with a WS row.

Bind off all sts loosely—finger completed.

**Third and Fourth Fingers**

Work as for second Finger.

**LEFT GLOVE**

Work as for right Glove, reversing pattern and thumb placement as follows:

Loosely cast on 46 sts.

**Establish Cable Pattern**

**(WS)** Work in 1 x 1 rib across 10 sts, place a marker (pm); p6 (Row 1 of Cable); pm, k1, work in 1 x 1 rib to end.

Continue as for right Glove.

**Establish Eyelet Pattern**

Work as right Glove.

**Shape Thumb**

**Row 1 (RS):** Work in pattern across 20 sts, pm for thumb; M1, k3, M1; pm, work in patt to end—48 sts.

Continue as for right Glove.

**Divide for Thumb**

**(RS)** Work in patt across to second marker; remove marker, turn, leaving remaining 23 sts unworked (or place on holder).

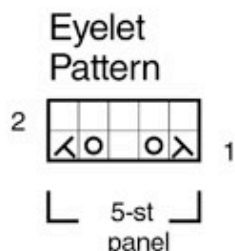
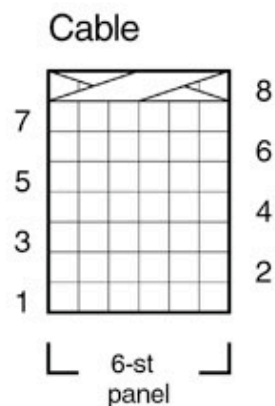
**(WS)** Purl across to remaining marker; remove marker, turn, leaving remaining 20 sts unworked—15 sts for thumb.

Work as for right Glove for remainder of piece.

**FINISHING**

Block pieces to measurements, being careful not to flatten texture. Sew thumb, finger and side seams.

Using yarn needle, weave in ends.



[Visit Bond America online](#)

[Visit Caron International online](#)

**CARON**

©2008 Caron International