

Cancun Spa Tunic

designed by
Ann E. Smith



Technique used: Knit



EXPERIENCED
MATERIALS

[shop online](#)

[NaturallyCaron.com Spa](#)

(75% Microdenier Acrylic/25% Bamboo);

#0007 Naturally: 4(5, 5, 6) skeins

[shop online](#)

[One pair size U.S. 6 \(4mm\) straight needles](#) or size needed to obtain gauge.

[shop online](#)

[One size U.S. 7 \(4.5mm\) circular needle,](#)

24"/61cm long

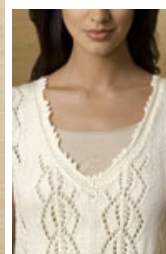
[shop online](#)

[One size E4 \(3.5mm\) crochet hook](#)

Stitch markers

One stitch holder

Yarn needle



[click to enlarge](#)

[schematic](#)



[Printer Friendly instructions](#)

Updated 4/20/12

SIZES: Small (Medium, Large, X-Large)

FINISHED MEASUREMENTS

Bust: 36 (40, 44, 48)"/91.5 (101.5, 112, 122)cm

Length: 28 (28 ½, 29, 29 ½)"/71 (72.5, 73.5, 75)cm

GAUGE

In Body Patt with smaller needles, 22 sts and 28 rows = 4"/10cm

SPECIAL ABBREVIATIONS

sl 2-k1-*p*ssso: Slip 2 sts as if to work k2tog-k1-pass 2 slipped sts together over the k1 – double dec made.

STITCHES USED

Body Pattern (panels of 19 sts):

Row 1 (RS): K2, yo, k4, k2tog, yo, sl 2-k1-*p*ssso, yo, ssk, k4, yo, k2.

Row 2 and following WS rows: Purl.

Row 3: K3, yo, k2, k3tog, yo, k3, yo, (sl 1 as if to pl, k2tog, *p*ssso – alternate double dec made), k2, yo, k3.

Row 5: K4, yo, k1, k2tog, yo, k1, sl 2-k1-*p*ssso, k1, yo, ssk, k1, yo, k4.

Row 7: K5, yo, k2tog, yo, k1, sl 2-k1-*p*ssso, k1, yo, ssk, yo, k5.

Row 9: K3, k2tog, yo, k1, yo, k2, sl 2-k1-*p*ssso, k2, yo, k1, yo, ssk, k3.

Row 11: K2, k2tog, yo, k3, yo, k1, sl 2-k1-pssso, k1, yo, k3, yo, ssk, k2.

Row 13: K1, k2tog, yo, k5, yo, sl 2-k1-pssso, yo, k5, yo, ssk, k1.

Row 14: Purl.

Rep Rows 1-14 for body patt.

BACK

With larger needles, CO 199 (199, 243, 243) sts.

Border:

Row 1 (RS): *K1, yo, k9, sl 2-k1-pssso, k9, yo; rep from * across, ending k1.

Row 2: P2, * k19, p3; rep from * across, ending k19, p2.

Row 3: K2, *yo, k8, sl 2- k1-pssso, k8, yo **, sl 2-k1-pssso; rep from * across, ending last rep at **, k2 – 183 (183, 223, 223) sts.

Row 4: *P3, k17; rep from * across, ending p3.

Row 5: *K3, yo, k7, sl 2-k1-pssso, k7, yo; rep from * across, ending k3.

Row 6: P4, *k15, p5; rep from * across, ending k15, p4.

Row 7: K4, *yo, k6, sl 2-k1-pssso, k6, yo **, k1, sl 2-k1-pssso, k1; rep from * across, ending last rep at **, k4 – 167 (167, 203, 203) sts.

Row 8: *P5, k13; rep from * across, ending p5.

Row 9: *K5, yo, k5, sl 2-k1-pssso, k5, yo; rep from * across, ending k5.

Row 10: P6, *k11, p7; rep from * across, ending k11, p6.

Row 11: K6, *yo, k4, sl 2-k1-pssso, k4, yo **, k2, sl 2-k1-pssso, k2; rep from * across, ending last rep at **, k6 – 151 (151, 183, 183) sts.

Row 12: *P7, k9; rep from * across, ending p7.

Row 13: *K7, yo, k3, sl 2-k1-pssso, k3, yo; rep from * across, ending k7.

Row 14: P8, *k7, p9; rep from * across, ending k7, p8.

Row 15: K8, *yo, k2, sl 2-k1-pssso, k2, yo **, k3, sl 2-k1-pssso, k3; rep from * across, ending last rep at **, k8 – 135 (135, 163, 163) sts.

Row 16: P9, *k5, p9; rep from * across.

Row 17: *K9, yo, k1, sl 2-k1-pssso, k1, yo; rep from * across, ending k9.

Row 18: P10, *k3, p11; rep from * across, ending k3, p10.

Row 19: K10, *yo, sl 2-k1-pssso, yo **, k4, sl 2-k1-pssso, k4; rep from * across, ending last rep at **, k10 – 119 (119, 143, 143) sts.

Change to smaller needles.

Est patt:

Set-up Row: P14, *place marker (pm), p19, pm, p5; rep from * across for 2 (2, 3, 3) times more, pm, p19, pm, p14.

Row 1 (RS): K14 for St st, *Body Pat Row 1 over 19 sts, k5 for St st; rep from * across, ending Body Pat Row 1 over 19 sts, k14 for St st.

Row 2: Purl across.

Row 3: Dec 1 st each edge, cont in est pat across.

Cont est patt, dec 1 st each edge every 8th (16th, 8th, 16th) row for 10 (5, 10, 5) times more – 97 (107, 121, 131) sts. Work even until 20" from beg, ending WS.

Armhole Shaping

BO 5 (6, 7, 8) at beg of the next 2 rows—87 (95, 107, 115) sts. Keeping to est patt, dec 1 st each edge every RS row 7 (9, 12, 13) times. Work even on rem 73 (77, 83, 89) sts until piece from beg measures 28 (28 ½, 29, 29 ½)", ending WS. BO all sts knitwise.

FRONT

Work as for Back until piece from beg measures 18 (18 ½, 19, 19 ½)", ending WS.

V-Neck Shaping

Next row (RS): Patt across 48 (53, 60, 65) sts and place on holder for left front, work next 2 sts tog, then work in patt to end of row.

Right Front: Purl across 48 (53, 60, 65) right front sts.

Dec row (RS): K1, ssk, pat to end.

Rep Dec row every RS row 13 times more then dec every 4th row 8 times; at the same time when the piece measures same as Back to underarm, shape armhole same as on Back--14 (16, 19, 22) sts rem. Work even until same length as Back, ending WS. BO all sts knitwise.

Left Front: With WS facing, join yarn and purl across 48 (53, 60, 65) left front sts from holder.

Dec row (RS): Patt across to last 3 sts, k2tog, k1.

Complete as for right front.

FINISHING

Join shoulder seams.

Armbands

With RS facing and smaller needles, pick up and k 92 (98, 104, 108) sts along armhole edge. Knit 2 rows. BO knitwise on WS. Join side seams.

Neckband

Rnd 1: With RS facing and crochet hook, beg at right side of back neck, work 45 sc to shoulder, work 51 sc evenly spaced along left front edge, sc in st from holder, 51 sc along right neck edge, join with sl st in first sc—148 sc.

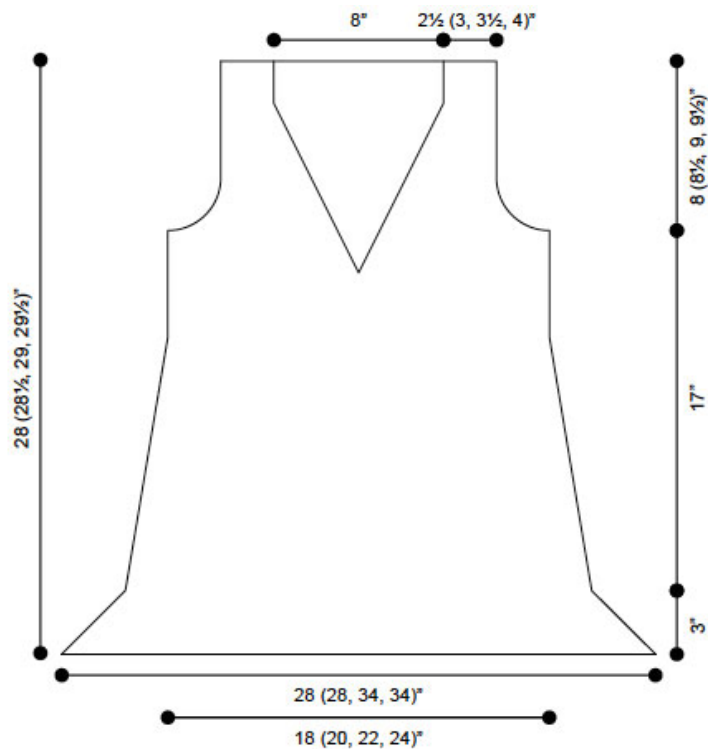
Rnd 2: Ch 1, sc in same sc as joining, sc2tog, sc in 39 sc, sc2tog, sc in 43 sc on back neck; sc in 50 sc, sc3tog, sc in 50 sc; join with sl st in first sc – 144 sc. Join.

Rnd 3: Ch 1, sc in same sc as joining and next 42 sc, sc in 49 sc, sc3tog, sc in 49 sc, join with sl st in first sc – 142 sc.

Rnd 4: Ch 1, sc in same sc as joining and next 42 sc, sc in 48 sc, sc3tog (pm on sc3tog), sc in 48 sc, join with sl st in first sc – 140 sts. Fasten off.

With WS facing, join yarn with slip st in 2nd st to right of marked st. Ch 3, sl st in same sc as joining, sl st in next st, in next st (sl st, ch 3, sl st – picot made), sl st in next st, picot in next st. * Sl st in next 5 sc, (picot in next st, sl st in next st) twice, picot in next st; rep from * around, ending sl st in last 5 sc before beginning picot. Fasten off.

Using yarn needle, weave in ends.



CARON

©2012 Caron International