



Subscribe to Caron Connections, our free eNewsletter

Enter your e-mail address

[subscribe](#)

*The Yarn. The Web. The Experience.*

[Home](#)

[Yarns](#)

[Pattern Boutique](#)

[Gallery](#)

[Guide to Style](#)

[Cari's Blog](#)

[Where to Buy](#)

# Eluma Striped Baby Blanket

designed by  
Marilyn Losee



Technique used: Knit



EASY

YARN

**Naturally Caron.com Spa**

(75% Microdenier Acrylic/25% Bamboo):

8.5 oz (MC);

1.5 oz each in 6 colors (A), (B), (C), (D), (E), (F)

Shown in:

#0007 Naturally (MC)

#0001 Rose Bisque name (A)

#0002 Coral Lipstick (B)

#0003 Soft Sunshine (C)

#0004 Green Sheen (D)

#0005 Ocean Spray (E)

#0006 Berry Frappe (F)

One each circular needle size US 7 and 8 (4.5 and 5 mm), 36"/91 cm long, or size to obtain gauge

**Note:** Blanket is worked back and forth in rows; circular needle is used to accommodate large number of stitches.

Yarn needle

Row counter (optional)



[click to enlarge](#)

[schematic](#)

[Printer Friendly instructions](#)

## SIZES

One size – larger crib

## FINISHED MEASUREMENTS

Blanket measures approximately 36"/91.5 cm wide by 42"/107 cm long

## GAUGE

In Stitch pattern, 19 sts and 24 rows = 4"/10 cm, using larger needle

## COLOR SEQUENCE

In Stitch pattern, \* work 2 rows F, 2 rows MC, 2 rows A, 2 rows MC, 2 rows D, 2 rows MC, 2 rows C, 2 rows MC, 2 rows B, 2 rows MC, 2 rows E, 2 rows MC; repeat from \* 10 times, then work 2 rows F.

## STITCHES USED

Garter stitch (Garter st)

Stockinette stitch (St st)

**Stripe Pattern (multiple of 4 sts + 3)**

**Note:** Slip all sts purlwise.

**Row 1 (RS):** Using CC (see Color Sequence and Chart), K3, \* slip 1, k3; repeat from \* across.

**Row 2:** Purl.

**Rows 3 and 4:** Using MC, knit (garter ridge).

**Row 5:** Using CC, K1, \*slip 1, k3; repeat from \* across to last 2 sts, slip 1, k1.

**Row 6:** Purl.

**Rows 7 and 8:** Using MC, knit (garter ridge).

Repeat Rows 1 - 8 for St patt, following Color Sequence.

**NOTES**

Blanket is worked horizontally in Stripe pattern following Color Sequence (see Chart).

While working Stitch pattern, slip stitches on CC stripes will be centered under the center st of the k3 from previous CC stripe.

Carry MC up edge when not in use; CC may be carried up side of piece to eliminate multiple ends, but must be carried very loosely. Work over the carried strands when working borders.

All Borders are worked with smaller needle.

**HELPFUL**

When picking up for Top and Bottom borders, pick up 3 sts in Garter ridges of Side-border, \* pick up 2 sts in first 3 color stripes, then 3 sts in fourth color; repeat from \* across, end pick up 3 sts in Garter ridges of Side-border, and 1 st in last st.

To keep ends from working loose when laundering, use a sewing needle and matching thread to secure ends.

**BLANKET**

Using larger needle and MC, cast on 183 sts.

**Side Border**

**(RS)** Change to smaller needle; knit 6 rows (3 garter ridges).

**Stripe Section**

**(RS)** Change to larger needle and F; begin Stitch pattern and Color sequence. Work Color Sequence a total of 11 times, then Rows 1 and 2 once more using F.

**Side Border**

**(RS)** Change to smaller needles and MC; knit 6 rows (3 garter ridges).

Using larger needle, bind off all sts loosely.

**FINISHING**

**Top and Bottom Borders**

With RS facing, using smaller needle and MC, pick up and knit 157 sts evenly across (see Helpful).

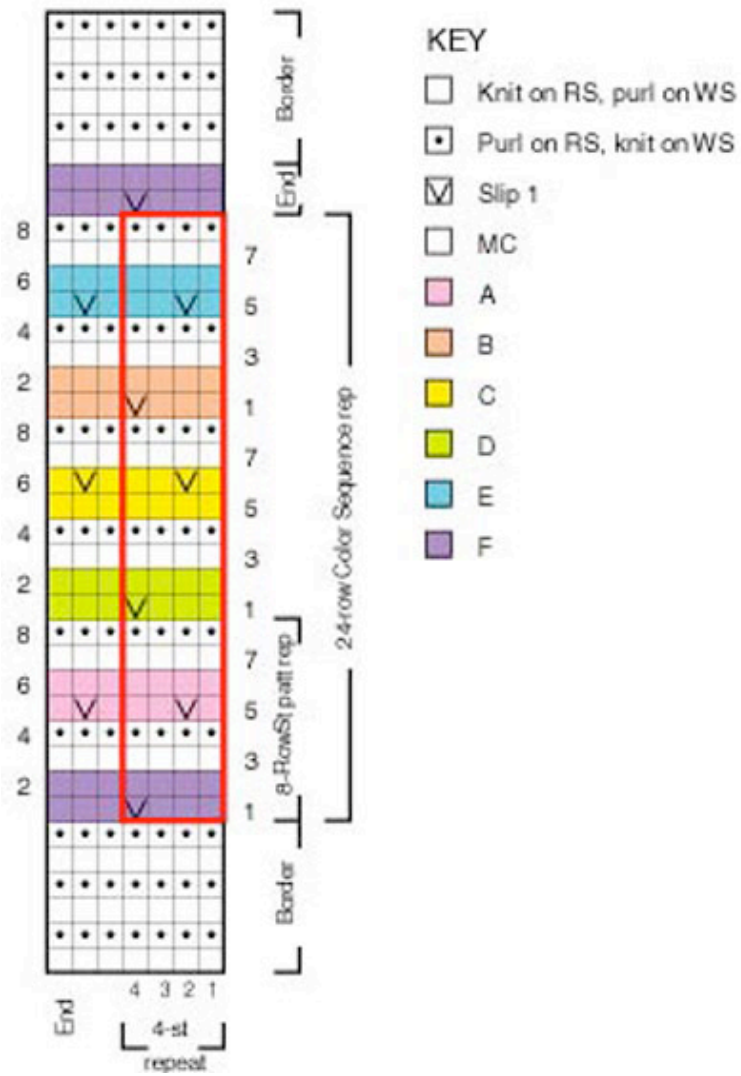
(WS) Knit 6 rows.

Using larger needle, bind off all sts loosely.

Repeat at opposite end.

Block piece to measurements.

Using yarn needle, weave in ends.



[Visit Bond America online](http://www.bondamerica.com)

[Visit Caron International online](http://www.caroninternational.com)

**CARON**

©2008 Caron International