



Subscribe to  
Caron Connections, our free e-newsletter.

Enter your e-mail address

Subscribe

*The Yarn. The Web. The Experience.*

Home

Yarns

Pattern Boutique

Designer Studio

Guide to Style

Caron Blog

Where to Buy

## Europa Scarf

designed by  
Susan Lowman



Technique used: Crochet



EASY

### MATERIALS

[NaturallyCaron.com Spa](http://NaturallyCaron.com Spa)

(75% Microdenier Acrylic/25% Bamboo);

9 oz

Shown in: #0004 Green Sheen

One size US H-8 (5 mm), crochet hook or size to  
obtain gauge.

Yarn needle.



[click to enlarge](#)

[chart](#) | [diagram](#)



[Printer Friendly instructions](#)

### FINISHED MEASUREMENTS

Scarf measures approximately 12"/30.5cm wide x 54"/137cm long

### GAUGE

Using US H-8 (5mm) hook, 6 mesh = 4 1/4"/11cm; 7 rows = 3 3/4"/9.5cm

### STITCHES USED

Chain (ch), double crochet (dc), single crochet (sc), slip stitch (sl st)

### SPECIAL TERMS

**Closed mesh:** Dc in next 3 dc (or 2 dc in next ch-2 sp, dc in next dc).

**Open mesh:** Ch 2, sk next 2 sts, dc in next dc.

**Picot:** Ch 3, sl st in top of last sc made.

### SCARF

Ch 55.

**Row 1 (RS):** Dc in 5th ch from hook (skipped chs count as first dc), dc in each remaining ch across, turn—17 closed mesh (52 dc).

**Row 2:** Ch 3 (counts as dc here and throughout), dc in next 3 dc, [ch 2, sk next 2 dc, dc in next dc] 15 times, dc in next 2 dc, dc in top of turning ch, turn—2 closed mesh and 15 open mesh (22 dc and 15 ch-2 sps).

**Row 3:** Ch 3, dc in next 3 dc; ch 2, sk next ch-2 sp, dc in next dc, 2 dc in next ch-2 sp, dc in next dc, ch 2, sk next ch-2 sp, dc in next dc, \*[2 dc in next ch-2 sp, dc in next dc] 3 times, ch 2, sk next ch-2 sp, dc in next dc, 2 dc in next ch-2 sp, dc in next dc, ch 2, sk next ch-2 sp, dc in next dc; rep from \* once, dc in next 2 dc, dc in top of turning ch, turn—11 closed mesh and 6 open mesh.

**Rows 4-16:** Work according to chart and Special Terms. On each row, ch 3 at beginning of row, work last dc of last closed mesh into top of turning ch and turn at end of row.

**Rows 17-100:** Repeat Rows 3-16 six more times.

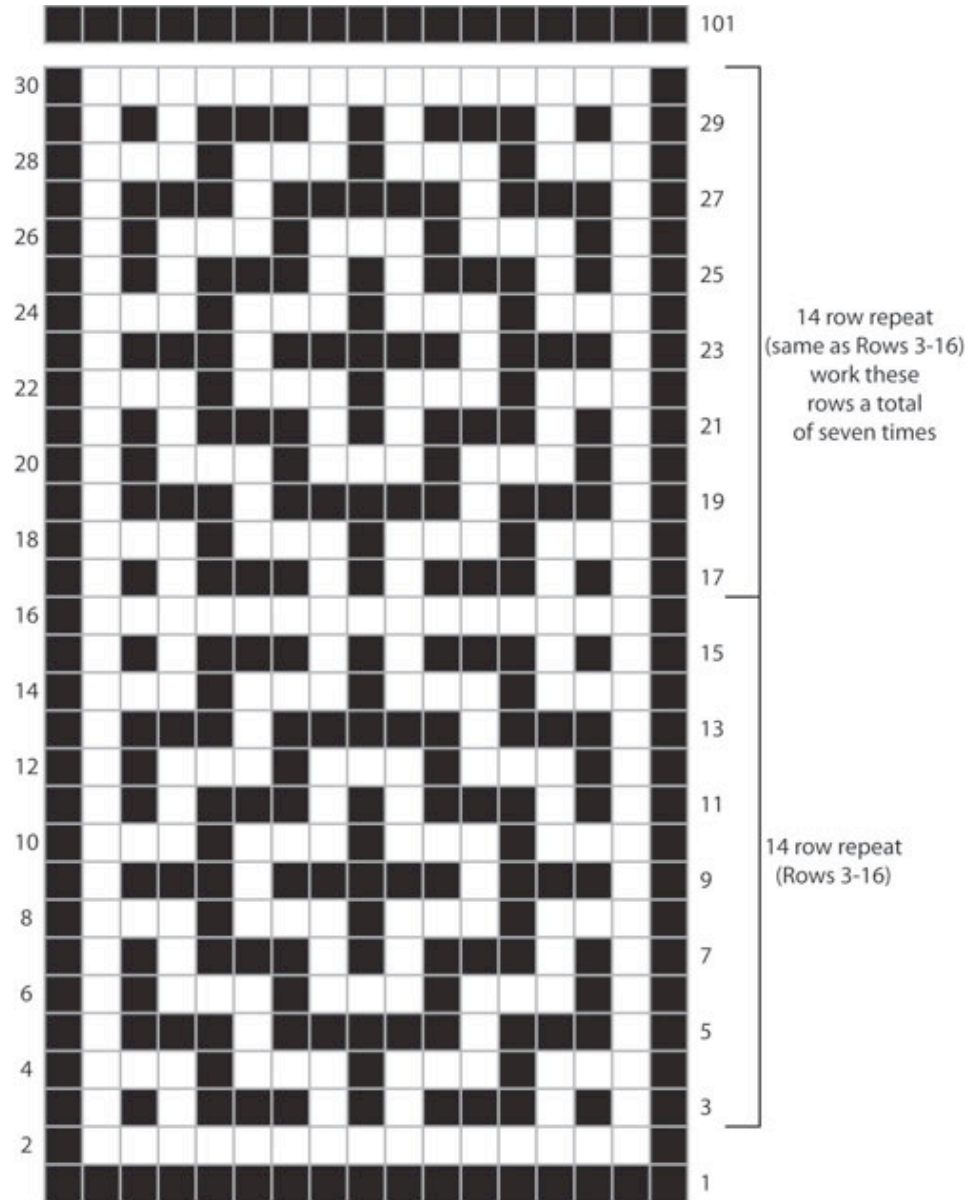
**Row 101:** Ch 1, dc in each dc and ch across. Do not turn.

Do not fasten off.

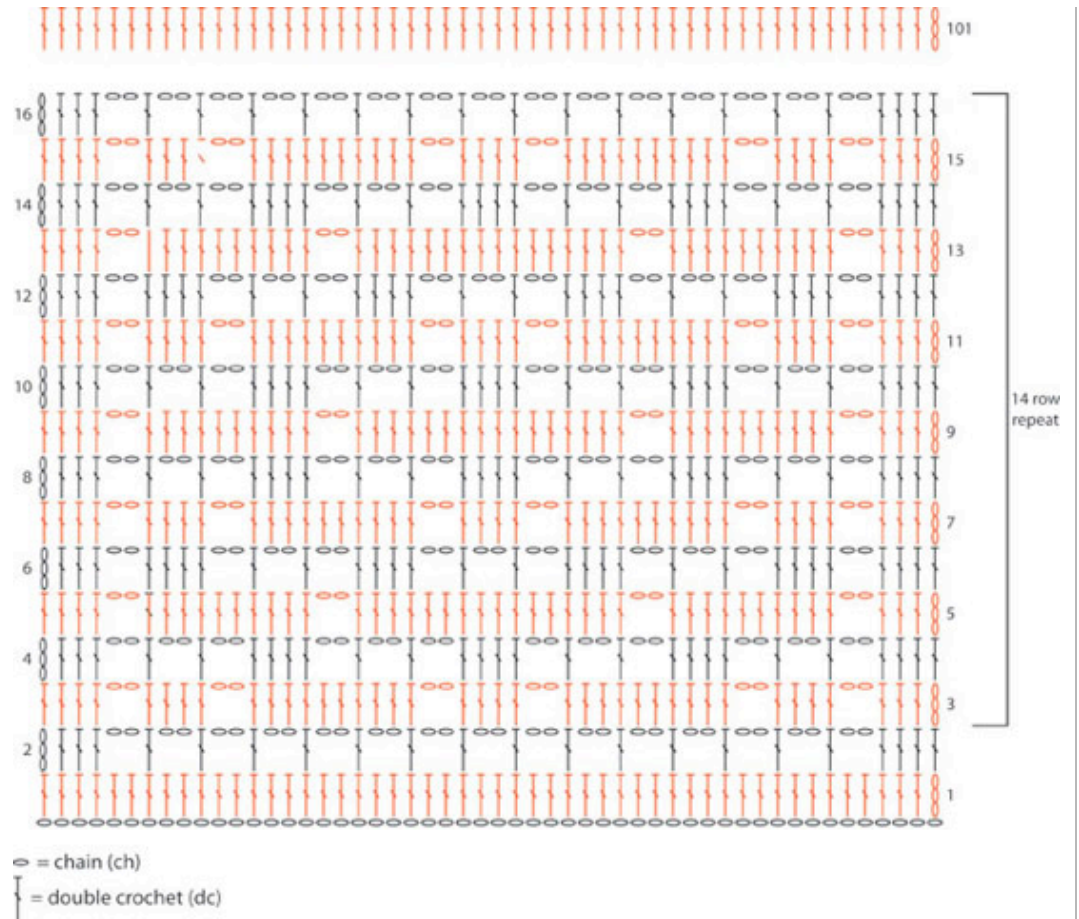
**Edging:** Ch 1, (2 sc, picot, sc) in top of last dc made; working across long edge, sc around post of same dc; \*sc in ch at base of same dc, sc in next ch-sp, picot, sc in top of next dc, sc around post of same dc; rep from \* across to next corner; working in free lps of foundation ch along bottom edge, (2 sc, picot, sc) in ch at base of last dc worked on Row 1, sc in next 3 chs, [picot, sc in next 4 chs] 11 times, picot, sc in next 3 chs, (2 sc, picot, sc) in next ch; working along right edge, sc in next ch-sp; \*\*sc in ch at base of next dc, sc around post of same dc, picot, sc in top of same dc, sc in next ch-sp; rep from \*\* across to next corner; (2 sc, picot, sc) in 3rd ch of turning ch; working along top edge, sc in next 3 dc; [picot, sc in next 4 dc] 11 times, picot, sc in next 3 dc; join with sl st in first sc. Fasten off.

#### FINISHING

Using yarn needle, weave in ends. Block to measurements, if desired.



- = closed mesh: Dc in next 3 sts (this could be 3 dc or 2 ch and 1 dc)
 
 } } }
- = open mesh: Ch 2, sk next 2 sts, dc in next dc.
 
 } ○
- = chain (ch)
- = double crochet (dc)



**CARON**  
©2010 Caron International